



GROUP

HR1



Intuitive complement

to pedestrian access control system



Montage

Easier than ever.



DEVICE DESCRIPTION

The swing gates are designed for assisting pedestrian access control at guarded passage ways, inside buildings and on the outside (under roofing). Devices are intended for cooperation with electronic systems of pedestrian traffic and personal access control as supplementary devices to turnstiles for passage ways where strict access control is not required and wide passage way is a key factor.

Each version can be composed of stainless steel arm (HR1-M/A) or glass arm (HR1-M/A-S).

Examples of use:

- points of ticket control/access control and passenger traffic,
- authorised personnel only passage ways, as well as directing passenger traffic,
- points of ticket control and fees
- e.g. to sports facilities, show facilities, exhibition halls, theatres, cinemas, access and time attendance
- control points in working places e.g. dedicated areas in factories, offices.



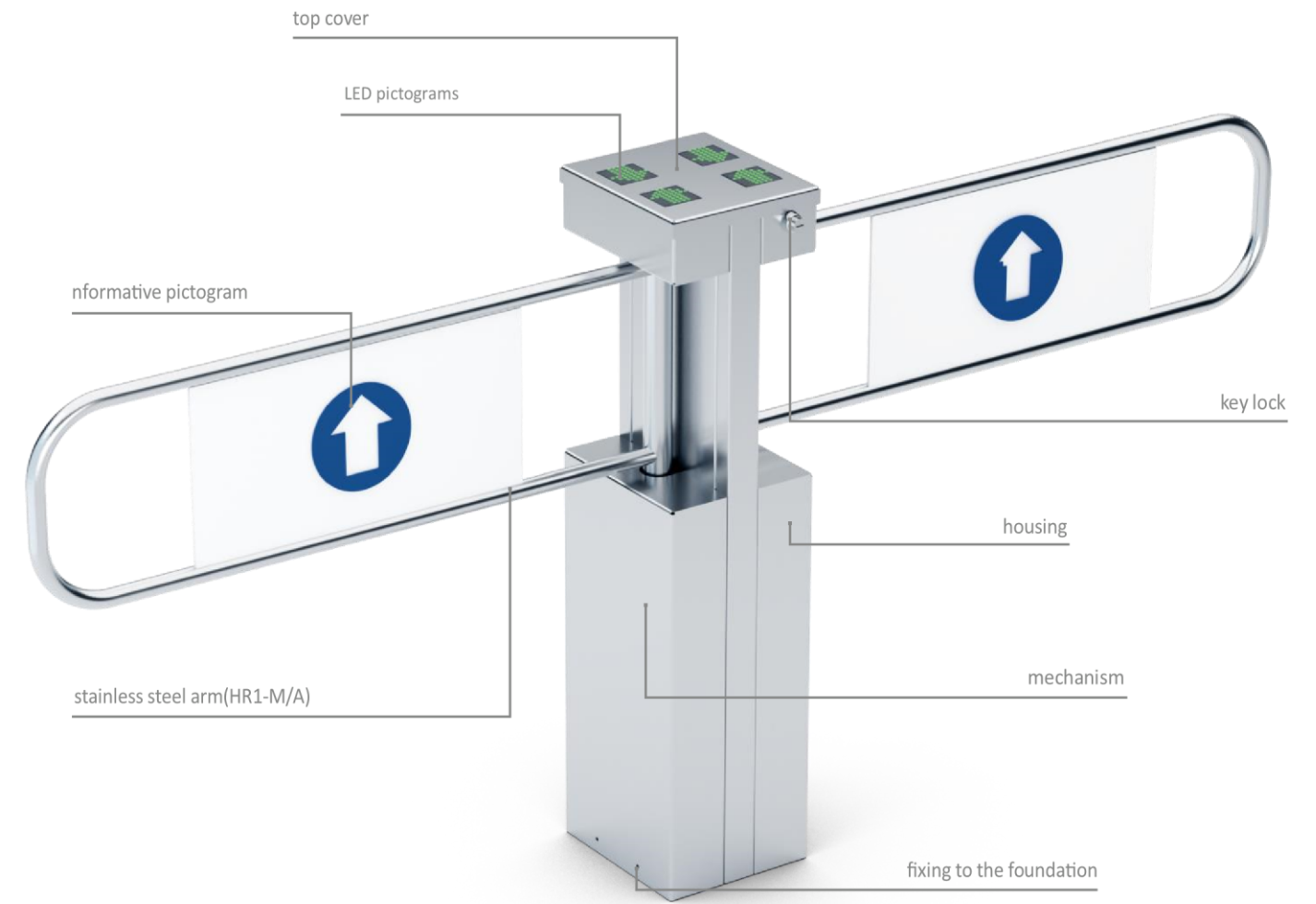
RENDER Z FUNKCJĄ

Accompaniment of the effective access control

DEVICE'S DESCRIPTION HR1-M / HR1-A



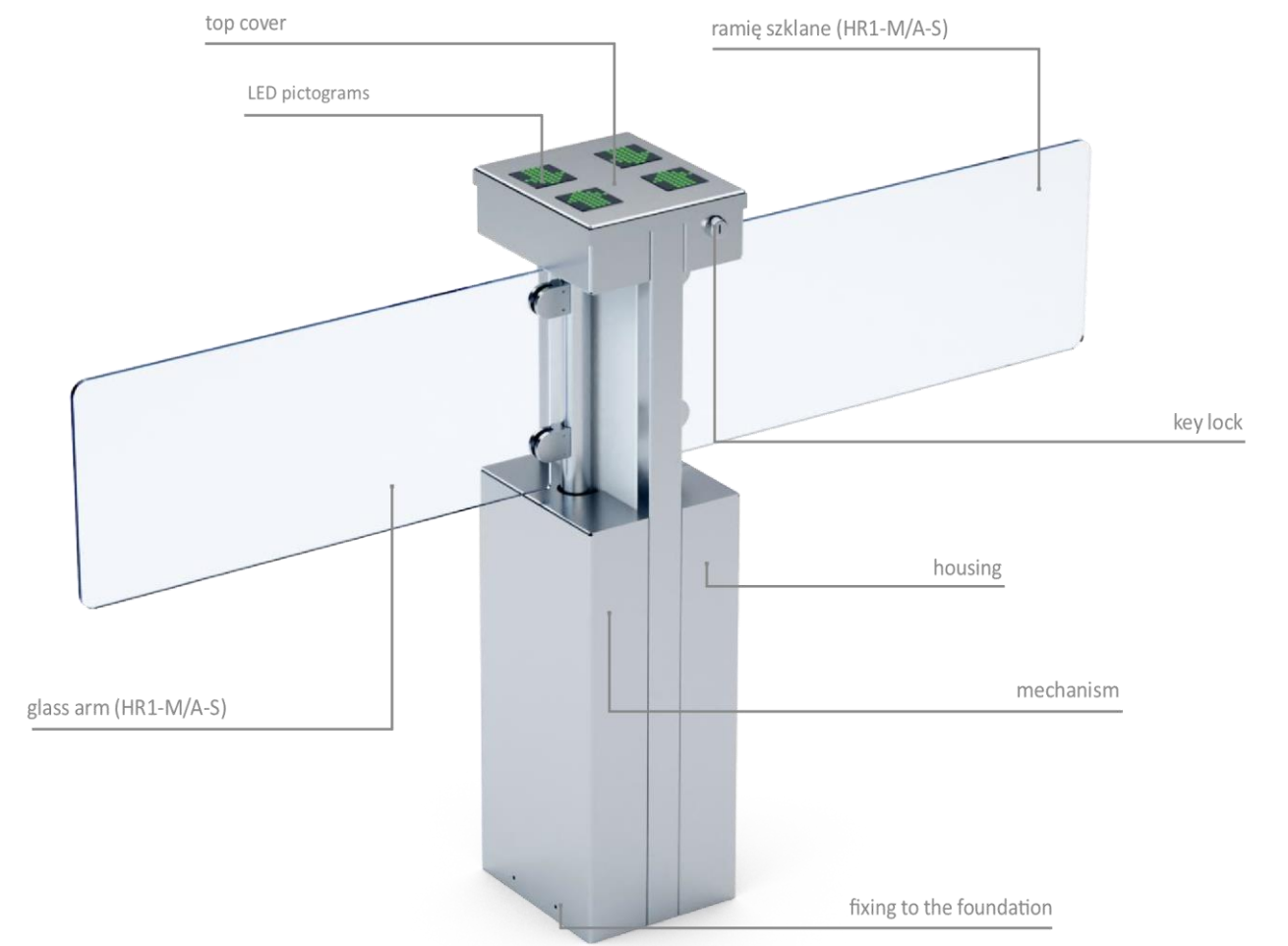
DEVICE'S DESCRIPTION HR1-M2 / HR1-A2



DEVICE'S DESCRIPTION HR1-A-S



DEVICE'S DESCRIPTION HR1-A2-S

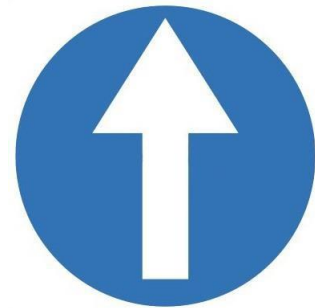


TYPE OF FINISHING

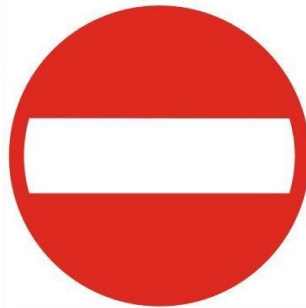


Stainless steel - INOX AISI 304

TYPE OF PICTOGRAMS



included with the device



included with the device

TECHNICAL PARAMETERS

ELECTRONIC CIRCUIT

- Steering input for the first traffic direction (e.g. for connecting the reader)
- Steering input for the second traffic direction (e.g. for connecting the reader and steering button).
- Possibility to set the device operation modes.
- Sound signaling.

CONSTRUCTION:

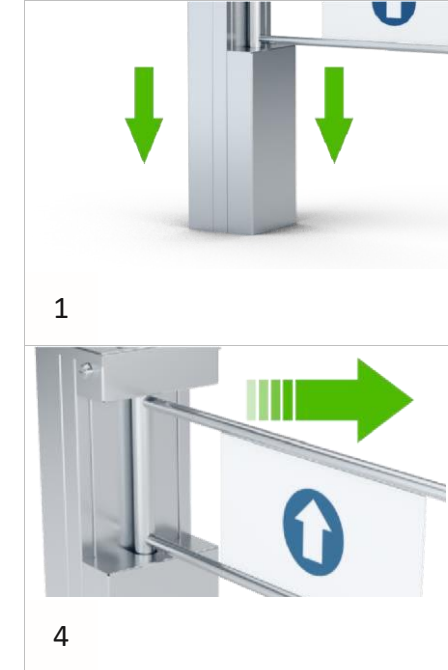
- Simplified assembly to the foundation with glued anchor bolts

and steering button). (bolts are not included)

DEVICE'S VERSIONS

PARAMETERS

FUNCTIONS

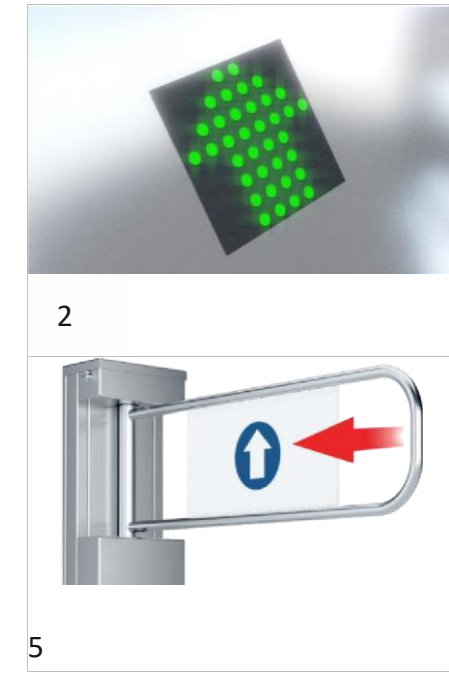


1. EASY INSTALATION

The construction of the device enables mounting it to the foundation without dismantling any part of the device.

4. VERIFYING THE ARM'S POSITION

Device is equipped with measurement system to verify the position of the arm.



Visual signalling (diode pictograms) informs about traffic directions being turned on and turned off within the passage section. A red cross informs that the traffic direction is turned off/locked (the device disables a passage of a person); a green arrow informs that the traffic direction is turned on.

5. ARMS BLOCKING SYSTEM

The device is equipped with arms blocking system

| Indication's description | HR1 | Model (M/A) | Type of arm (./S) |
|--------------------------|-----|-------------|-------------------|
| Example of indication | HR1 | A | S |

into an electromechanical (HR1-A) or mechanical

having overload function. In case of applying

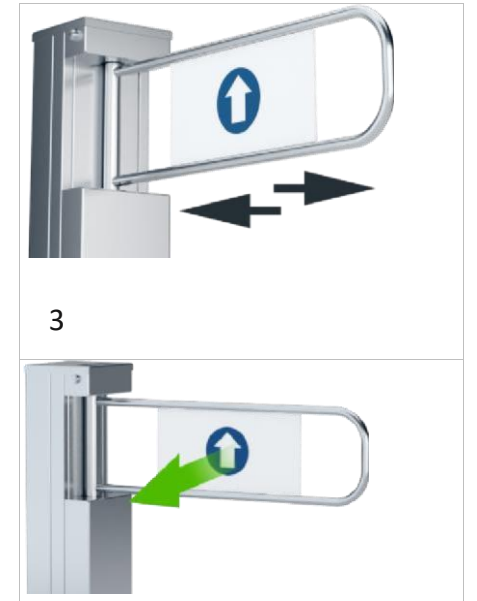
Description of the example indication:

- HR1-M-S - series HR1, model A (automatic), version with glass - S

M - manual (no arm supporting motor)

A - automatic (arm supporting motor) **S** - glass arm

extensive force to the arm this function releases the arms blocking system.



3. BIDIRECTIONAL MOVEMENT

The device enables work in various modes, eg: control of passenger traffic for both directions or control of passenger traffic for any chosen direction of movement.

6. SUPPORTING ARMS ROTARY MOTION

2. LED PICTOGRAMS

The mechanism of the device is equipped, depending on the model,

(HR1-M) arm rotation.

| |
|-----------------------|
| Power Supply v |
| Maximum power |
| Maximum current |
| Steering signal |
| Feedback signal |
| Operation temperature |
| Storage temperature |
| Maximum humidity |
| Operation environment |
| IP protection rating |
| Net weight [kg] |

| Name | Description |
|---------------|--|
| Power supply | Power supply 230/24V or 110/24V |
| Control panel | Control panel designed for manual steering of the gate |
| Model | Type of housing finishing |
| HR1-M-S | INOX/RAL . . . |

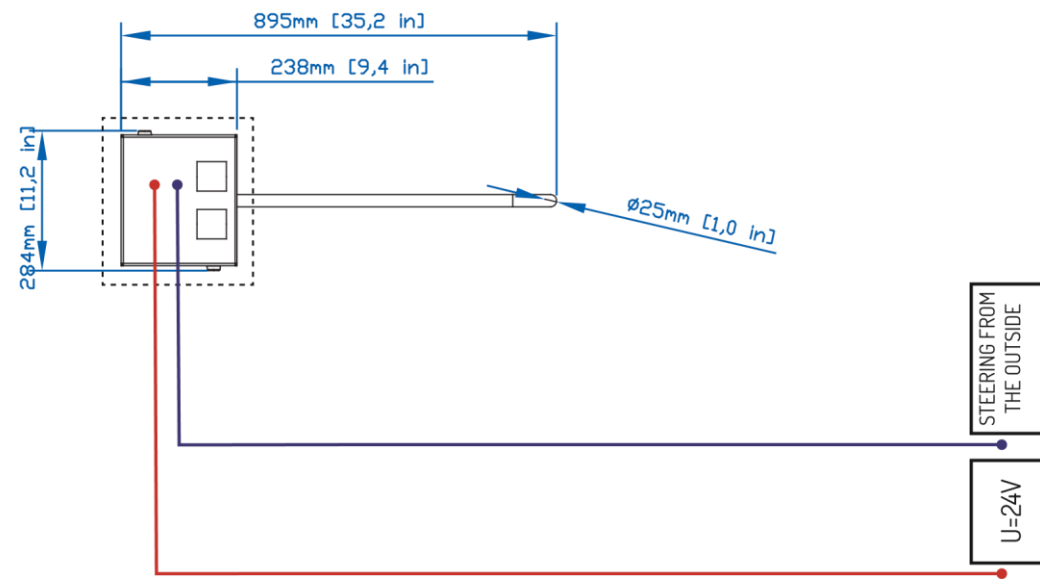
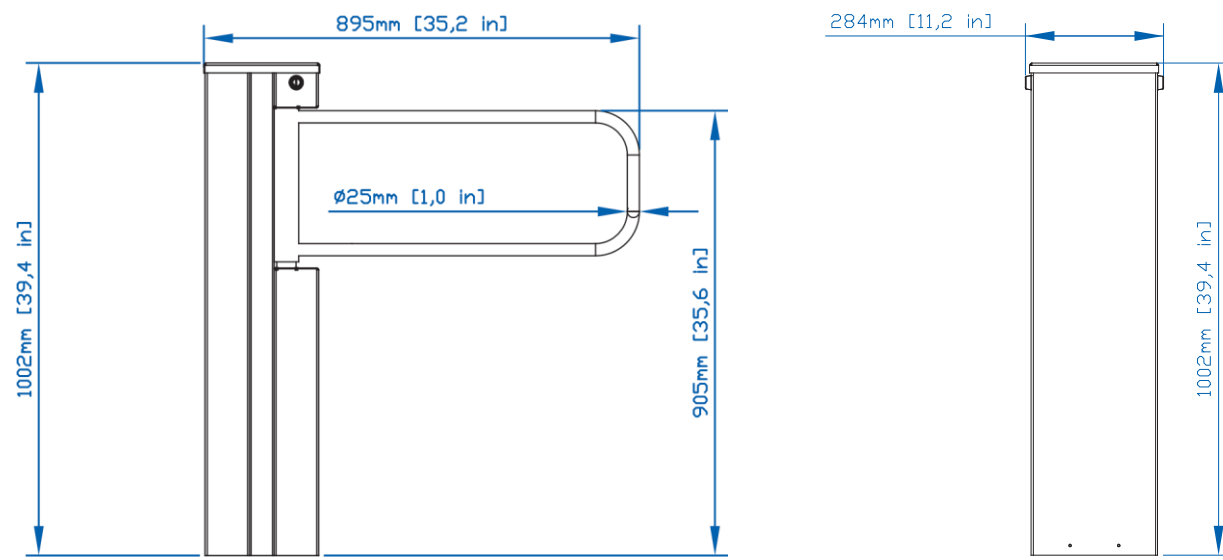
NOTE: Standard finishing is stainless steel AISI 304 (INOX).
 DEVICE'S INDICATION BASED ON THE TYPE OF THE HOUSING FINISHING

* - given data refers to a single gate mechanism, in the case of models with

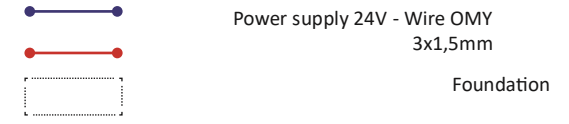
two arms (mechanisms), parameters for two mechanisms sho- Examples of indication:

- HR1 - A-S - RAL5010 - swing gate HR1 - A - S powder coated steel finishing colour RAL5010.
- HR1 - A-S - INOX - swing gate HR1 - A - S stainless steel AISI 304 finishing

DIMENSIONS - HR1-M/A

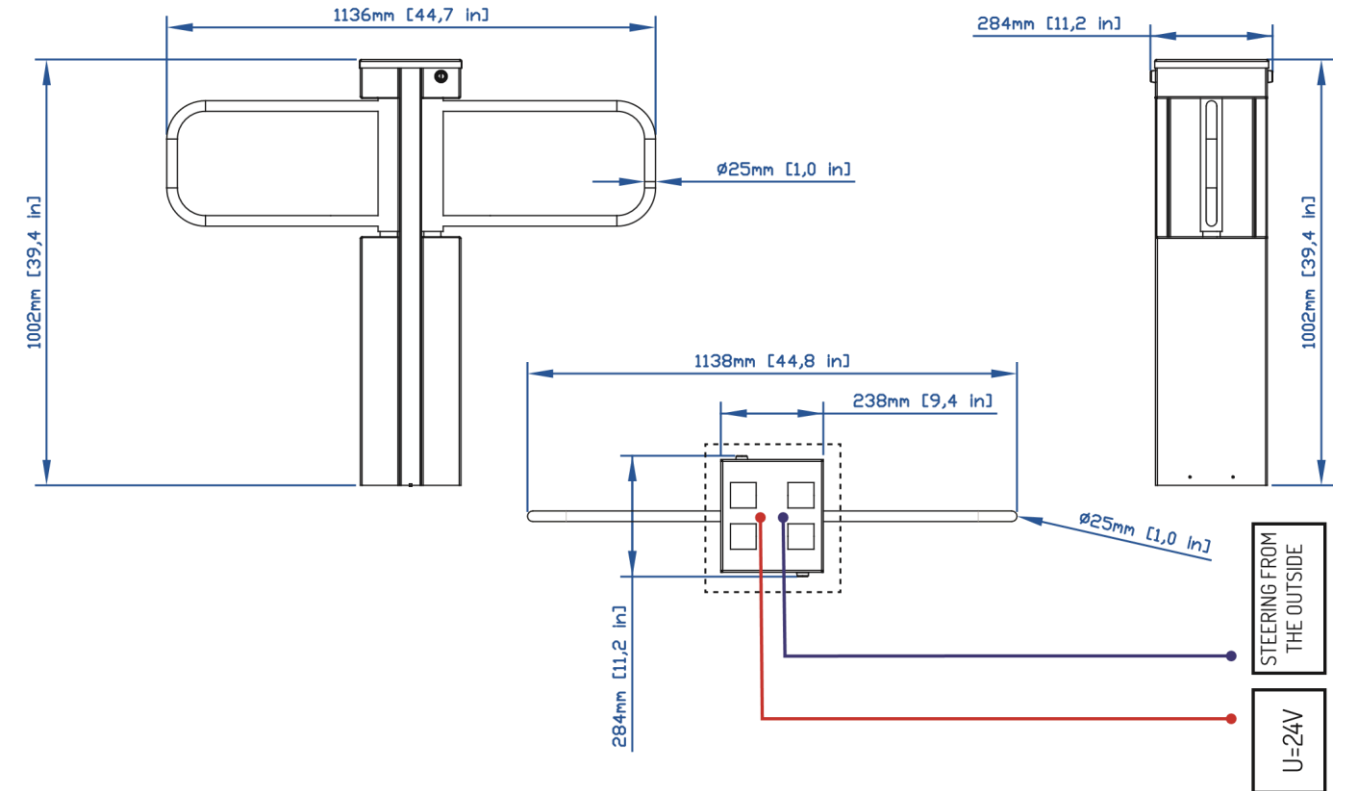
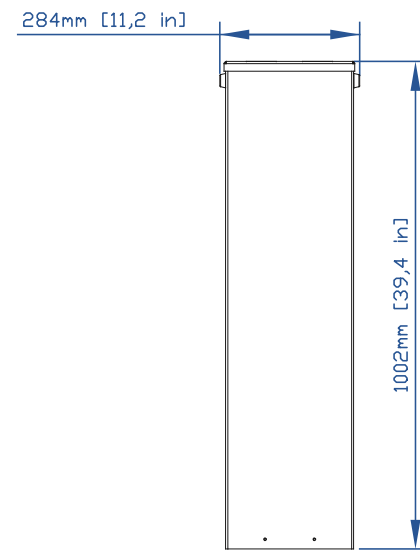
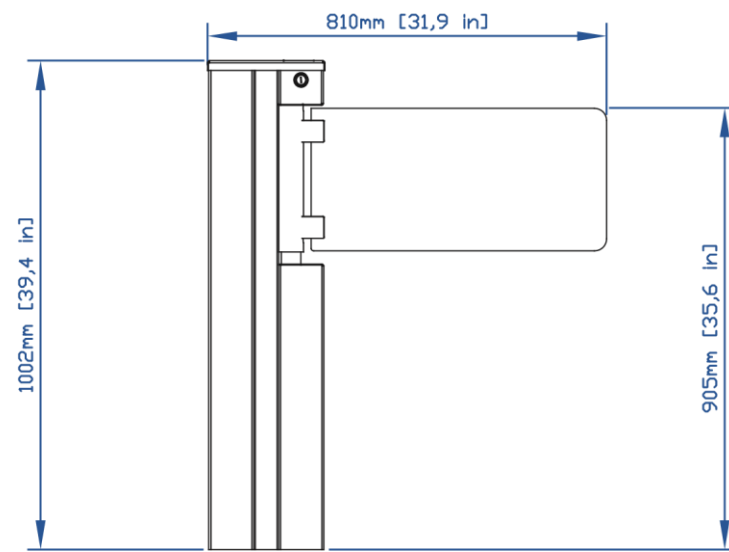


MAP KEY: Steering from the outside - twisted pair cable S/UTP



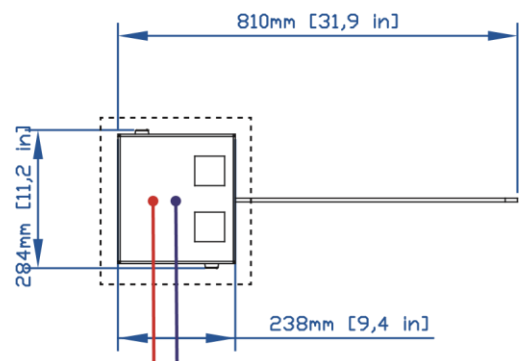
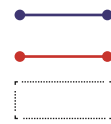
DIMENSIONS - HR1-M2/A2

DIMENSIONS - HR1-A-S



DIMENSIONS - HR1-A2-S

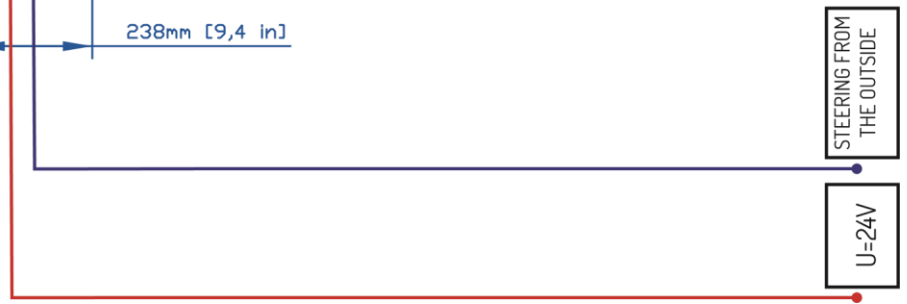
MAP

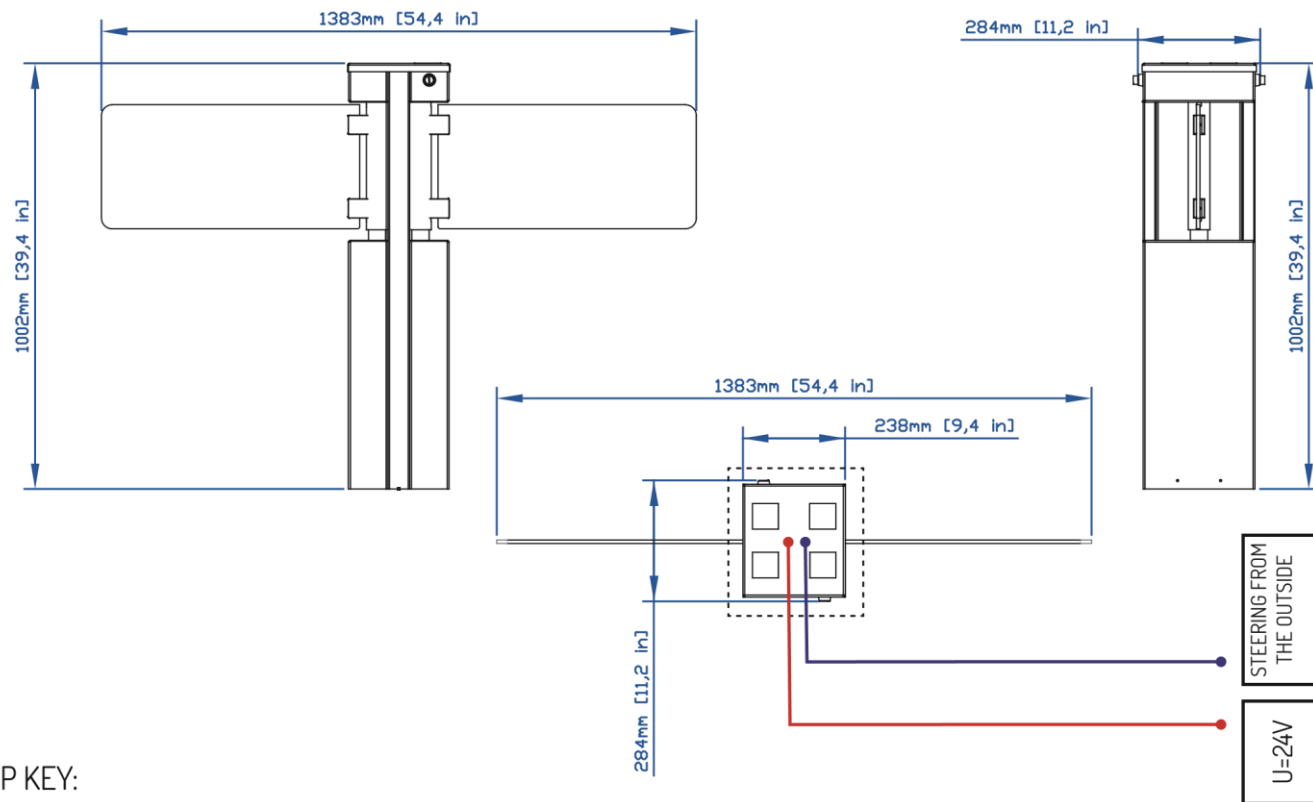


KEY:

- Steering from the outside - twisted pair cable S/UTP
- Power Supply 24V - wire OMY 3x1,5mm

Foundation Foundation





MAP KEY:

— Steering from the outside - twisted pair cable S/UTP

— Power supply 24V - Wire OMY 3x1,5mm





Kontakt: KLISING d.o.o.

e-mail: info@edge-group.info